



*Internationally Recognized  
Technically Advanced  
Innovative Products*

INNOVATION ♦ RELIABILITY ♦ QUALITY ♦ PERFORMANCE ♦ INNOVATION ♦ RELIABILITY ♦ QUALITY ♦ PERFORMANCE ♦ INNOVATION ♦ RELIABILITY ♦ QUALITY ♦ PERFORMANCE

The background of the central section is white, featuring a collection of faint, grey line drawings of various cable components. These include different types of connectors, splices, and cable segments, some with braided shields and others with smooth jackets. The drawings are scattered across the page, creating a technical and industrial feel.

# **GTI BARRIER CABLE SYSTEMS**



**GENERAL TECHNOLOGIES, INC.®**



# GTI Barrier Cable System

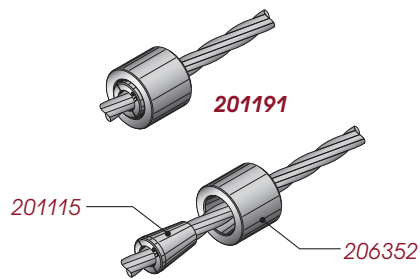
## Bare and Encapsulated Barrel Anchors

INNOVATION ♦ RELIABILITY ♦ QUALITY ♦ PERFORMANCE ♦ INNOVATION ♦ RELIABILITY ♦ QUALITY ♦ PERFORMANCE ♦ INNOVATION ♦ RELIABILITY ♦ QUALITY ♦ PERFORMANCE

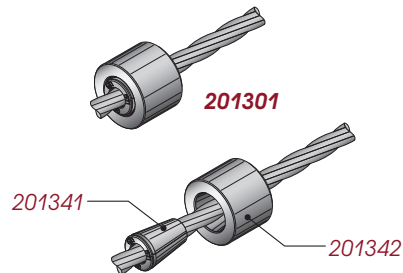
### Fixed-End and Stressing-End Anchorages for Barrier Cables

- Flexible configuration: connects to an angle/tube steel that is attached to concrete column/wall or to a plate/washer on the outside of concrete column.
- Durable: zinc-plated barrels and wedges can be exposed or encapsulated.
- Attractive: encapsulation caps come in concrete grey - custom cap colors are available by special order.

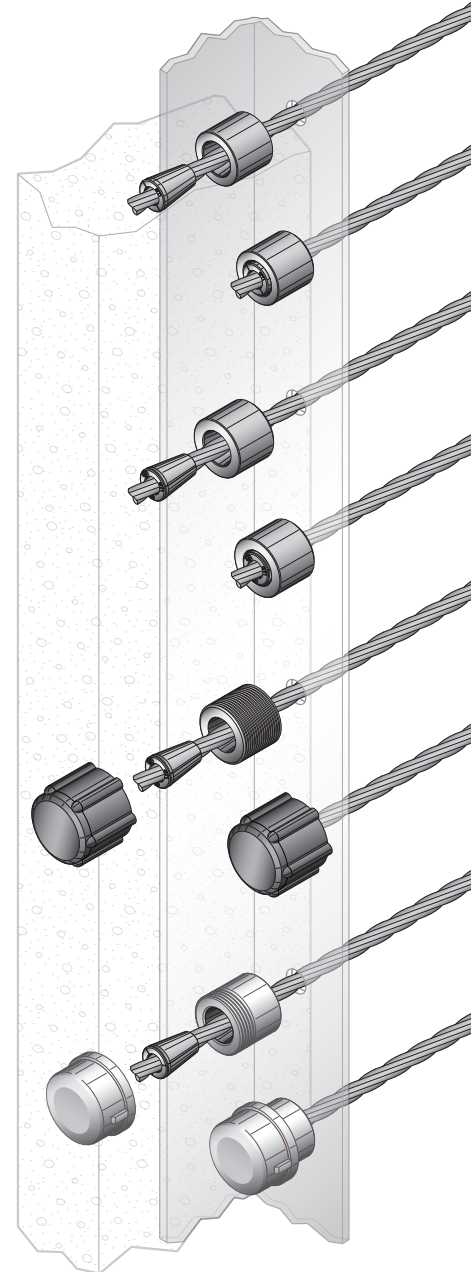
### Bare Barrel Anchors

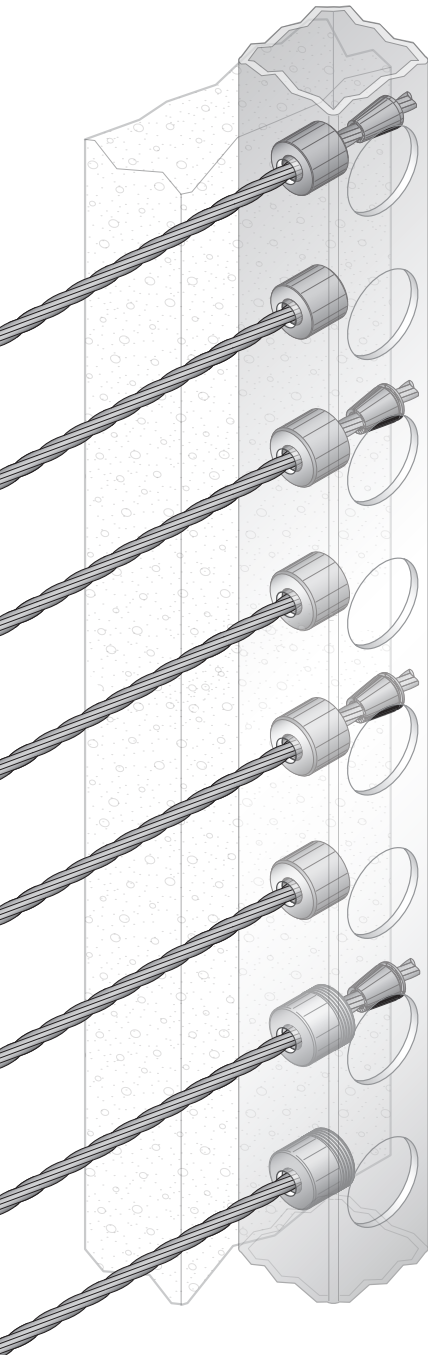


### Plated Barrel Anchors

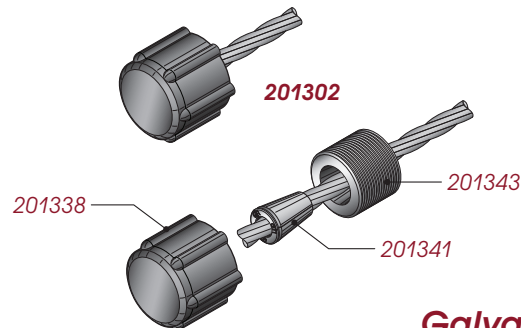


GTI - BARREL ANCHORS		
201191	SMOOTH BARREL ANCHOR SET FOR 0.5" STRAND	
	201115	WEDGE, 2 PIECE. .5", 1.2" LONG
	206352	0.5" Z-VOID BARREL ANCHOR, INTERMEDIATE
GTI BCS - BARREL ANCHORS, PLATED		
201301	BCS-05, SMOOTH BARREL ANCHOR SET FOR 0.5" STRAND	
	201341	BCS-05, GTI S1-05, 3PC WEDGE, PLATED
	201342	BCS-05, SMOOTH BARREL ANCHOR, PLATED

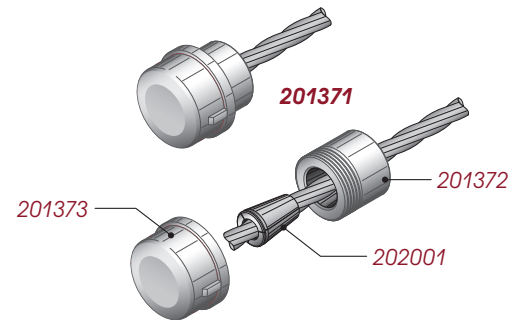




### Encapsulated Barrel Anchors



### Galvanized Cap Barrel Anchors



GTI BCS - ENCAPSULATED GTI BARREL ANCHORS		
201302	BCS-05, ENCAPSULATED BARREL ANCHOR SET FOR 0.5" STRAND	
	201338	BCS-05, CAP
	201341	BCS-05, GTI S1-05, 3PC WEDGE, PLATED
	201343	BCS-05, THREADED BARREL ANCHOR, PLATED
GTI BCS - GALVANIZED CAP BARREL ANCHORS		
201371	BCS-05, GALVANIZED CAP BARREL ANCHOR SET FOR 0.5" STRAND	
	201372	BCS-05, PIPE THREADED BARREL ANCHOR, PLATED
	201373	BCS-05, THREADED CAP, GALVANIZED
	202001	GTI GRABB-IT®, 1/2 3PC WEDGE, PLATED
SUBSTITUTE THREADED CAP		
	201374	GRABB-IT®, THREADED CABLE CAP, PLATED
SUBSTITUTE WEDGES		
	202002	GTI GRABB-IT®, 7/16 3PC WEDGE, PLATED
	202003	GTI GRABB-IT®, 3/8 3PC WEDGE, PLATED
	202004	GTI GRABB-IT®, 1/4 2PC WROPE WEDGE, PLATED



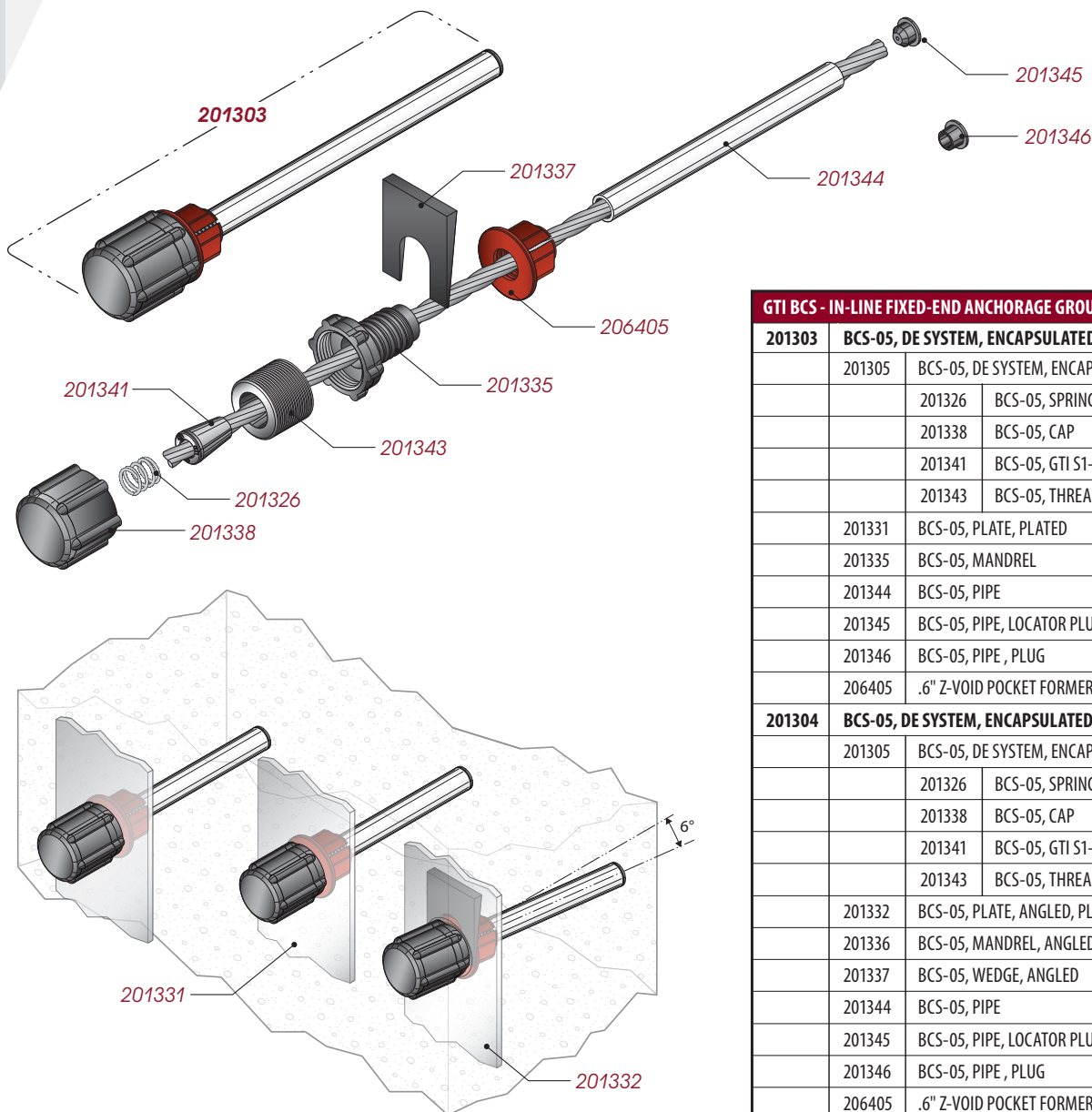
## GTI Barrier Cable System In-Line Fixed-End Anchorage Group

Internationally Recognized  
Technically Advanced  
Innovative Products

INNOVATION ♦ RELIABILITY ♦ QUALITY ♦ PERFORMANCE ♦ INNOVATION ♦ RELIABILITY ♦ QUALITY ♦ PERFORMANCE ♦ INNOVATION ♦ RELIABILITY ♦ QUALITY ♦ PERFORMANCE

**Fixed-End Anchorage assembly for end anchorages at concrete columns/walls, either contained within the column/wall or exposed on column's exterior.**

- In-line assembly accommodates up to 11 barrier cables.
- Encapsulated Barrel Anchors with Spring-Loaded Wedges eliminates the need for backstressing.
- A special plate with holes machined at 4" centers provides code specified alignment and spacing of barrier cables.
- A special angled assembly is available for ramps and special details that can accommodate up to a 6-degree offset.



### GTI BCS - IN-LINE FIXED-END ANCHORAGE GROUP

201303	BCS-05, DE SYSTEM, ENCAPSULATED, ASSEMBLY, 0.5", including	
	201305	BCS-05, DE SYSTEM, ENCAPSULATED, ASSEMBLY
	201326	BCS-05, SPRING, COUPLER
	201338	BCS-05, CAP
	201341	BCS-05, GTI S1-05, 3PC WEDGE, PLATED
	201343	BCS-05, THREADED BARREL ANCHOR, PLATED
	201331	BCS-05, PLATE, PLATED
	201335	BCS-05, MANDREL
	201344	BCS-05, PIPE
	201345	BCS-05, PIPE, LOCATOR PLUG
	201346	BCS-05, PIPE, PLUG
	206405	.6" Z-VOID POCKET FORMER, NUT
201304	BCS-05, DE SYSTEM, ENCAPSULATED, ANGLED, ASSEMBLY, 0.5", including	
	201305	BCS-05, DE SYSTEM, ENCAPSULATED, ASSEMBLY
	201326	BCS-05, SPRING, COUPLER
	201338	BCS-05, CAP
	201341	BCS-05, GTI S1-05, 3PC WEDGE, PLATED
	201343	BCS-05, THREADED BARREL ANCHOR, PLATED
	201332	BCS-05, PLATE, ANGLED, PLATED
	201336	BCS-05, MANDREL, ANGLED
	201337	BCS-05, WEDGE, ANGLED
	201344	BCS-05, PIPE
	201345	BCS-05, PIPE, LOCATOR PLUG
	201346	BCS-05, PIPE, PLUG
	206405	.6" Z-VOID POCKET FORMER, NUT



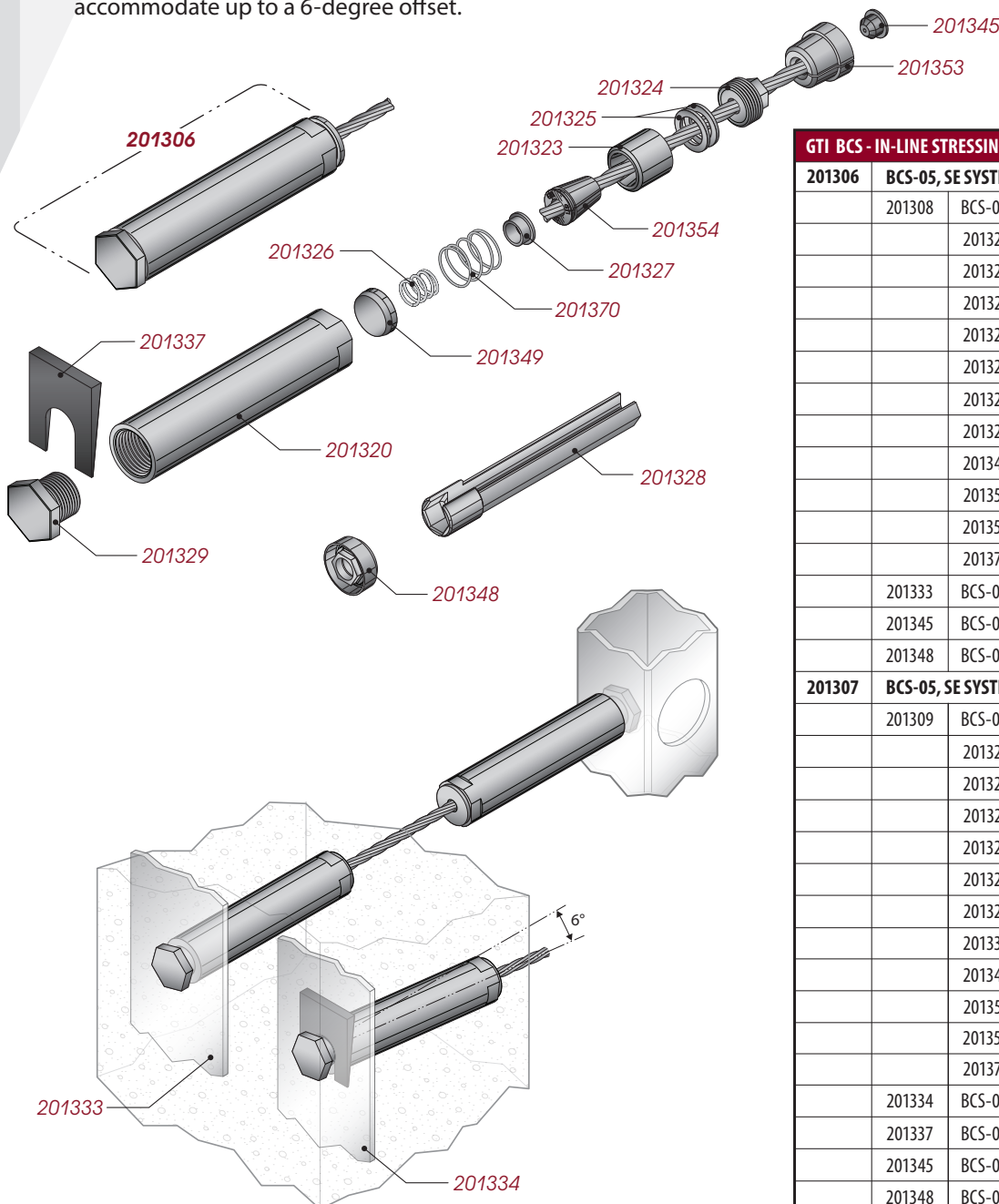
## GTI Barrier Cable System In-Line Stressing-End Anchorage Group

Internationally Recognized  
Technically Advanced  
Innovative Products

INNOVATION ♦ RELIABILITY ♦ QUALITY ♦ PERFORMANCE ♦ INNOVATION ♦ RELIABILITY ♦ QUALITY ♦ PERFORMANCE ♦ INNOVATION ♦ RELIABILITY ♦ QUALITY ♦ PERFORMANCE

**Stressing-End Anchorage assembly for end anchorages either contained within concrete columns/walls or attached to a steel member on the exterior of the column/wall that does not allow normal stressing.**

- Coupler can tension or remove the slack from the barrier cables when ends are inaccessible.
- In-line assembly accommodates up to 11 barrier cables.
- A special plate with holes machined at 4" centers provides code specified alignment and spacing of barrier cables.
- A special angled assembly is available for ramps and special details that can accommodate up to a 6-degree offset.



GTI BCS - IN-LINE STRESSING-END ANCHORAGE GROUP		
201306	BCS-05, SE SYSTEM W/PLATE, ASSEMBLY, 0.5", including	
	201308	BCS-05, SE COUPLER, TENSIONING, ASSEMBLY
	201320	BCS-05, BODY, SE COUPLER, PLATED
	201323	BCS-05, SMOOTH BARREL ANCHOR, COUPLER, PLATED
	201324	BCS-05, STRESSING NUT, COUPLER, PLATED
	201325	BCS-05, WASHER, COUPLER
	201326	BCS-05, SPRING, COUPLER
	201327	BCS-05, SPRING SPACER, COUPLER
	201329	BCS-05, SE COUPLER FASTENER NUT, PLATED
	201349	BCS-05, SPRING STOP, COUPLER
	201353	BCS-05, PLUG, SE COUPLER
	201354	BCS-05, GTI S1-05, 3PC WEDGE, PLATED
	201370	BCS-05, SPRING, COUPLER BARREL
	201333	BCS-05, PLATE, SE COUPLER, PLATED
	201345	BCS-05, PIPE, LOCATOR PLUG
	201348	BCS-05, POCKET FORMER, SE COUPLER
201307	BCS-05, SE SYSTEM W/PLATE, ANGLED, ASSEMBLY, 0.5", including	
	201309	BCS-05, SE COUPLER, TENSIONING, ANGLED, ASSEMBLY
	201320	BCS-05, BODY, SE COUPLER, PLATED
	201323	BCS-05, SMOOTH BARREL ANCHOR, COUPLER, PLATED
	201324	BCS-05, STRESSING NUT, COUPLER, PLATED
	201325	BCS-05, WASHER, COUPLER
	201326	BCS-05, SPRING, COUPLER
	201327	BCS-05, SPRING SPACER, COUPLER
	201330	BCS-05, SE COUPLER FASTENER NUT, ANGLED, PLATED
	201349	BCS-05, SPRING STOP, COUPLER
	201353	BCS-05, PLUG, SE COUPLER
	201354	BCS-05, GTI S1-05, 3PC WEDGE, PLATED
	201370	BCS-05, SPRING, COUPLER BARREL
	201334	BCS-05, PLATE, SE COUPLER, ANGLED, PLATED
	201337	BCS-05, WEDGE, ANGLED
	201345	BCS-05, PIPE, LOCATOR
	201348	BCS-05, POCKET FORMER, SE COUPLER
201328	BCS-05, WRENCH, COUPLER, PLATED	



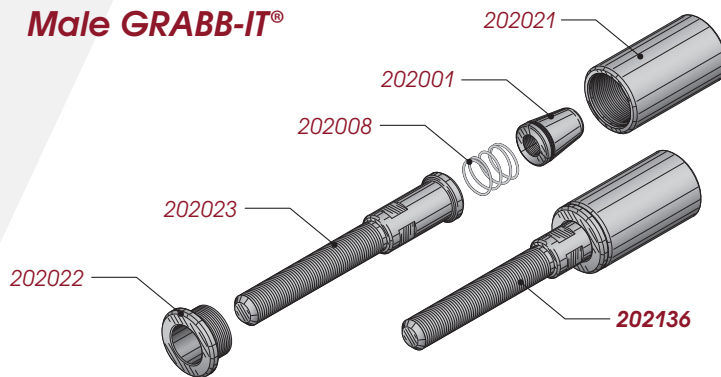


## GTI Barrier Cable System Male GRABB-IT® Products

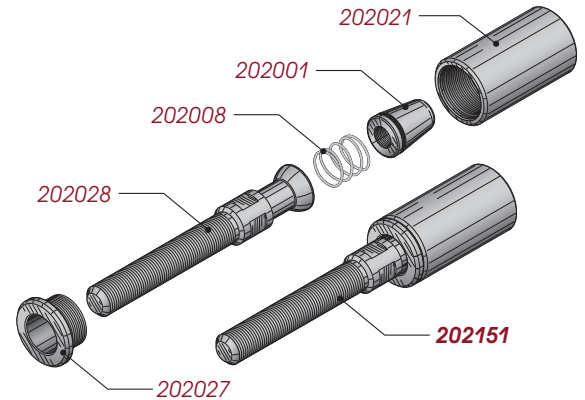
Internationally Recognized  
Technically Advanced  
Innovative Products

INNOVATION ♦ RELIABILITY ♦ QUALITY ♦ PERFORMANCE ♦ INNOVATION ♦ RELIABILITY ♦ QUALITY ♦ PERFORMANCE ♦ INNOVATION ♦ RELIABILITY ♦ QUALITY ♦ PERFORMANCE

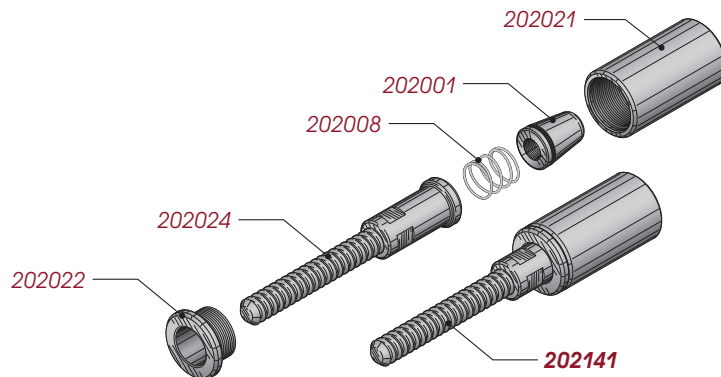
### Male GRABB-IT®



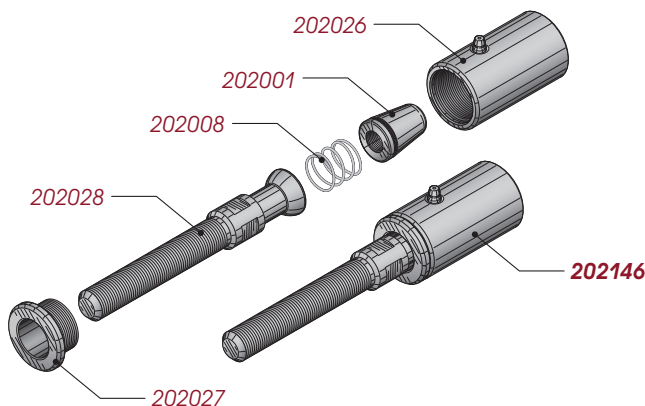
### Male Swivel GRABB-IT®, no Zerk



### Male GRABB-IT® with Coil Thread



### Male Swivel GRABB-IT®



#### GTI BCS - MALE GRABB-IT®

202136	GTI GRABB-IT®, MALE, 1/2"	
	202001	GTI GRABB-IT®, 1/2 3PC WEDGE, PLATED
	202008	GTI GRABB-IT®, SPRING 8989-.067
	202021	GTI GRABB-IT®, CHUCK BODY, PLATED
	202022	GTI GRABB-IT®, CHUCK CAP, PLATED
	202023	GTI GRABB-IT®, MALE STEM, PLATED

#### GTI BCS - MALE GRABB-IT® WITH COIL THREAD

202141	GTI GRABB-IT®, MALE, COIL THREAD, 1/2"	
	202001	GTI GRABB-IT®, 1/2 3PC WEDGE, PLATED
	202008	GTI GRABB-IT®, SPRING 8989-.067
	202021	GTI GRABB-IT®, CHUCK BODY, PLATED
	202022	GTI GRABB-IT®, CHUCK CAP, PLATED
	202024	GTI GRABB-IT®, MALE STEM, COIL THREAD, PLATED

#### GTI BCS - MALE SWIVEL GRABB-IT®

202146	GTI GRABB-IT®, MALE, SWIVEL, 1/2"	
	202001	GTI GRABB-IT®, 1/2 3PC WEDGE, PLATED
	202008	GTI GRABB-IT®, SPRING 8989-.067
	202026	GTI GRABB-IT®, SWIVEL CHUCK BODY, PLATED
	202027	GTI GRABB-IT®, SWIVEL CHUCK CAP, PLATED
	202028	GTI GRABB-IT®, SWIVEL MALE STEM, PLATED

#### GTI BCS - MALE SWIVEL GRABB-IT®, NO ZERK

202151	GTI GRABB-IT®, MALE, SWIVEL, NO ZERK, 1/2"	
	202001	GTI GRABB-IT®, 1/2 3PC WEDGE, PLATED
	202008	GTI GRABB-IT®, SPRING 8989-.067
	202021	GTI GRABB-IT®, CHUCK BODY, PLATED
	202027	GTI GRABB-IT®, SWIVEL CHUCK CAP, PLATED
	202028	GTI GRABB-IT®, SWIVEL MALE STEM, PLATED



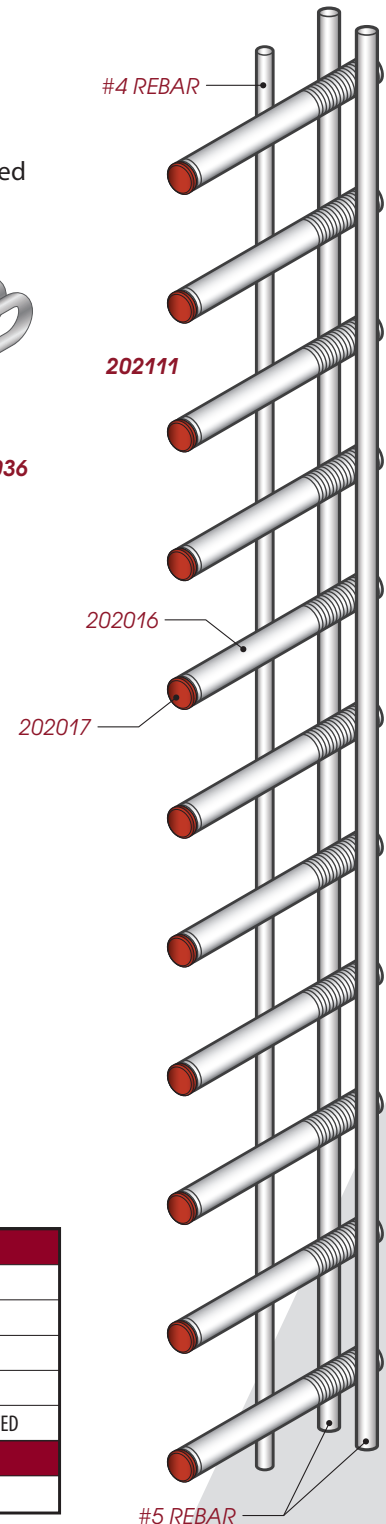
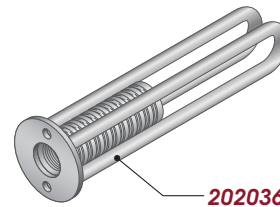
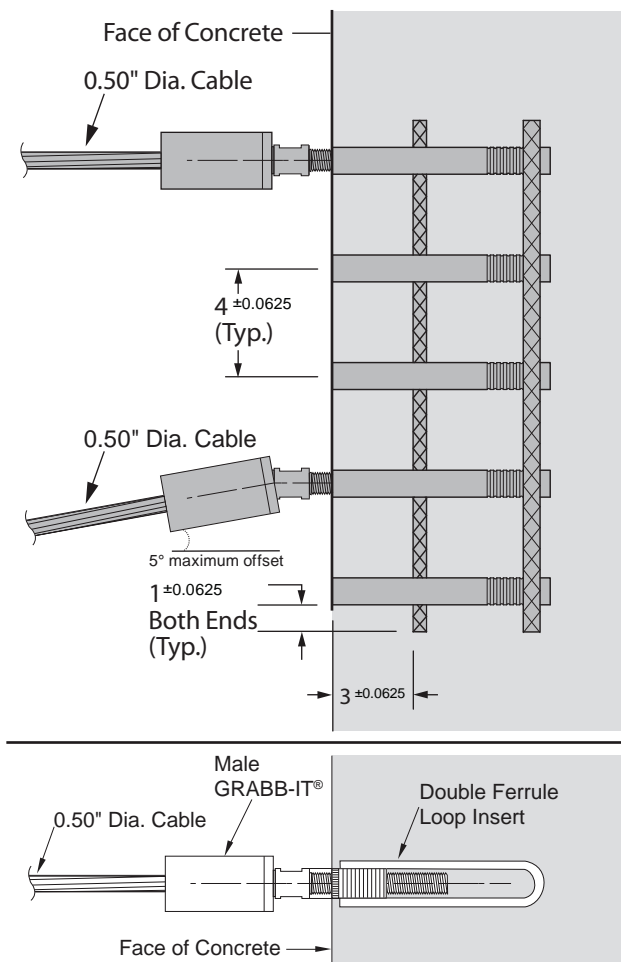
## GTI Barrier Cable System GRABB-IT® Rail Assembly

Internationally Recognized  
Technically Advanced  
Innovative Products

INNOVATION ♦ RELIABILITY ♦ QUALITY ♦ PERFORMANCE ♦ INNOVATION ♦ RELIABILITY ♦ QUALITY ♦ PERFORMANCE ♦ INNOVATION ♦ RELIABILITY ♦ QUALITY ♦ PERFORMANCE

### Cost Effective and Reliable, Every Time

- Significantly reduced installation time
- Easy and precise installation
- Prefabricated GRABB-IT® termination points ensure proper cable placement
- Standard spacing complies with code requirements
- One size works for all cable strand sizes, provided the proper barrier cable products are used



GTI BCS - GRABB-IT® RAIL ASSEMBLY		
202111	GTI GRABB-IT®, RAIL ASSEMBLY-11	
		#4 REBAR
		#5 REBAR
	202016	GTI GRABB-IT®, RAIL, INSERT, PLATED
	202017	GTI GRABB-IT®, RAIL, TAPERED CAP, PLATED
GTI BCS - GRABB-IT® DOUBLE LOOP INSERT		
202036	GTI GRABB-IT®, DOUBLE LOOP INSERT	

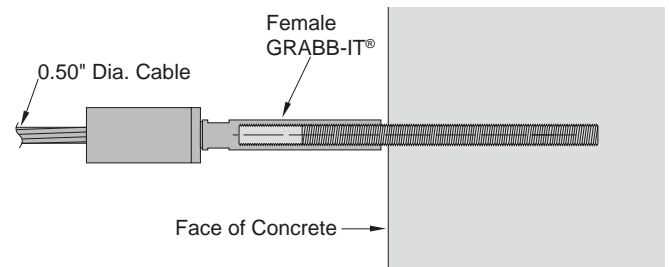
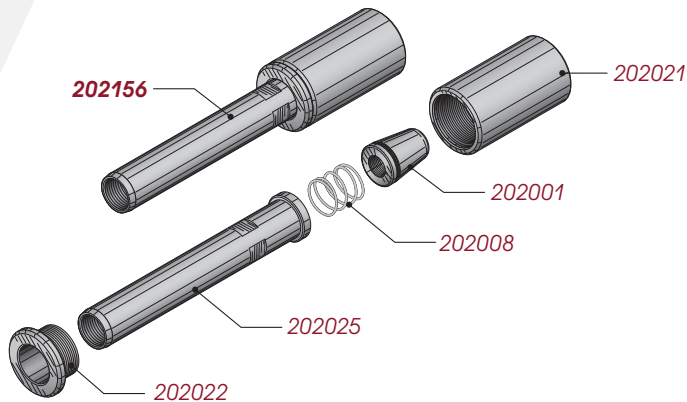


## GTI Barrier Cable System Female GRABB-IT® Products

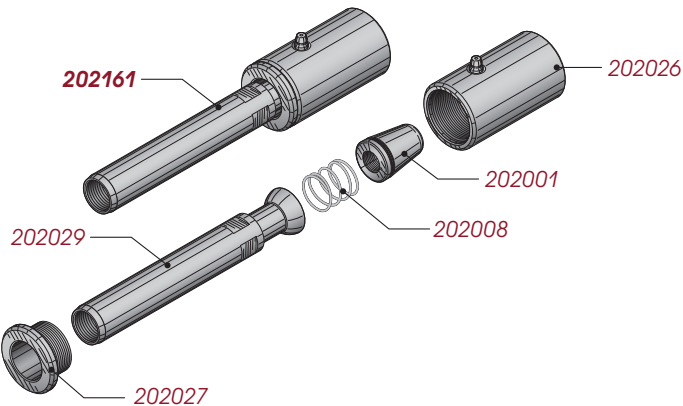
Internationally Recognized  
Technically Advanced  
Innovative Products

INNOVATION ♦ RELIABILITY ♦ QUALITY ♦ PERFORMANCE ♦ INNOVATION ♦ RELIABILITY ♦ QUALITY ♦ PERFORMANCE ♦ INNOVATION ♦ RELIABILITY ♦ QUALITY ♦ PERFORMANCE

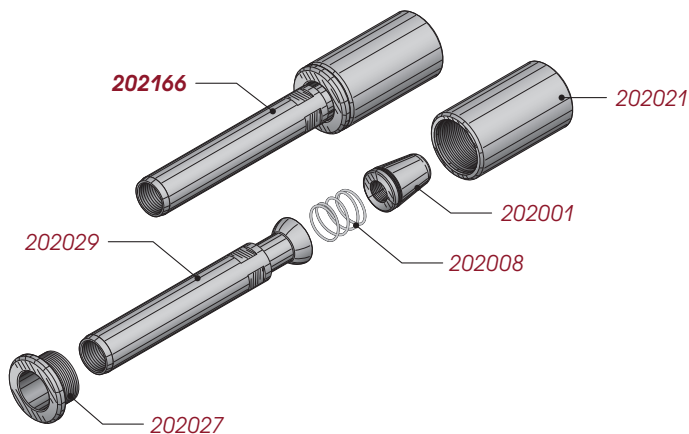
### Female GRABB-IT®



### Female Swivel GRABB-IT®



### Female Swivel GRABB-IT®, no Zerk



GTI BCS - FEMALE GRABB-IT®		
202156	GTI GRABB-IT®, FEMALE, 1/2"	
202001	GTI GRABB-IT®, 1/2 3PC WEDGE, PLATED	
202008	GTI GRABB-IT®, SPRING 8989-.067	
202021	GTI GRABB-IT®, CHUCK BODY, PLATED	
202022	GTI GRABB-IT®, CHUCK CAP, PLATED	
202025	GTI GRABB-IT®, FEMALE STEM, PLATED	
GTI BCS - FEMALE SWIVEL GRABB-IT®		
202161	GTI GRABB-IT®, FEMALE, SWIVEL, 1/2"	
202001	GTI GRABB-IT®, 1/2 3PC WEDGE, PLATED	
202008	GTI GRABB-IT®, SPRING 8989-.067	
202026	GTI GRABB-IT®, SWIVEL CHUCK BODY, PLATED	
202027	GTI GRABB-IT®, SWIVEL CHUCK CAP, PLATED	
202029	GTI GRABB-IT®, SWIVEL FEMALE STEM, PLATED	
GTI BCS - FEMALE SWIVEL GRABB-IT®, NO ZERK		
202166	GTI GRABB-IT®, FEMALE, SWIVEL, NO ZERK, 1/2"	
202001	GTI GRABB-IT®, 1/2 3PC WEDGE, PLATED	
202008	GTI GRABB-IT®, SPRING 8989-.067	
202021	GTI GRABB-IT®, CHUCK BODY, PLATED	
202027	GTI GRABB-IT®, SWIVEL CHUCK CAP, PLATED	
202029	GTI GRABB-IT®, SWIVEL FEMALE STEM, PLATED	





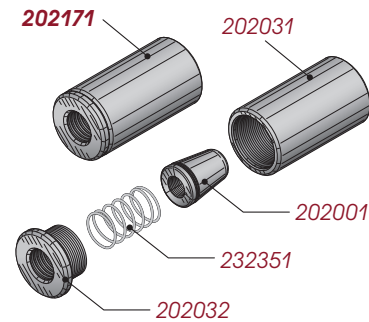
## GTI Barrier Cable System Fixed-End GRABB-IT® Products

INNOVATION ♦ RELIABILITY ♦ QUALITY ♦ PERFORMANCE ♦ INNOVATION ♦ RELIABILITY ♦ QUALITY ♦ PERFORMANCE ♦ INNOVATION ♦ RELIABILITY ♦ QUALITY ♦ PERFORMANCE

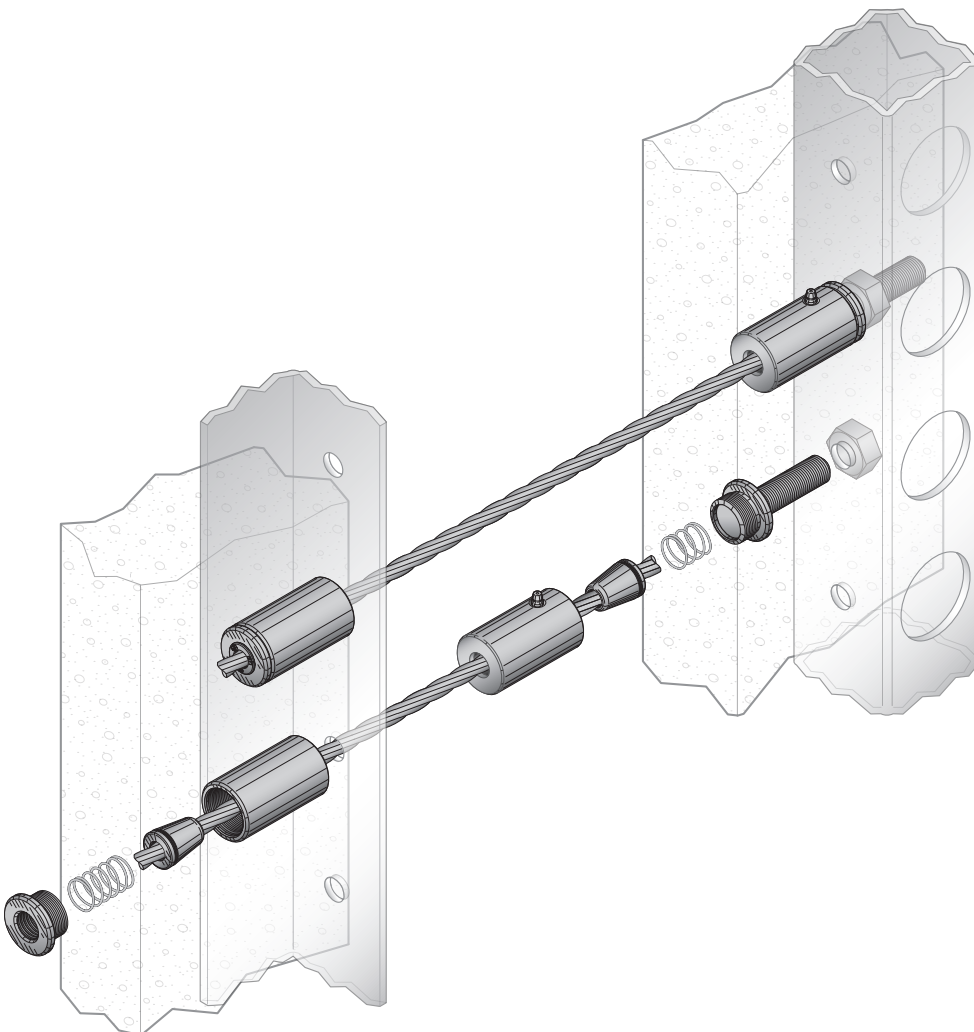
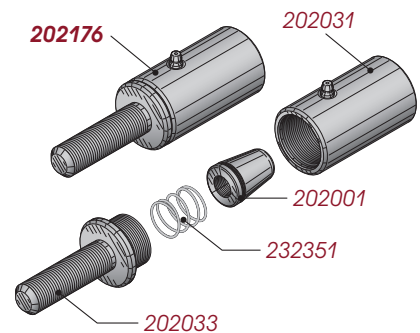
### Cost Effective and Reliable, Every Time

- Significantly reduced installation time
- Easy and precise installation
- Prefabricated GRABB-IT® termination points ensure proper cable placement
- Standard spacing complies with code requirements
- One size works for all cable strand sizes, provided the proper barrier cable products are used

### Fixed-End GRABB-IT® Chuck



### Fixed-End GRABB-IT® Chuck with Stem



GTI BCS - FIXED-END GRABB-IT® CHUCK		
202171	GTI GRABB-IT®, FIXED-END, 1/2"	
	202001	GTI GRABB-IT®, 1/2 3PC WEDGE, PLATED
	232351	F25-EL SLOCK SPRING
	202031	GTI GRABB-IT®, FE CHUCK BODY, PLATED
	202032	GTI GRABB-IT®, FE CHUCK CAP, PLATED
GTI BCS - FIXED-END GRABB-IT® CHUCK WITH STEM		
202176	GTI GRABB-IT®, FIXED-END WITH STEM, 1/2"	
	202001	GTI GRABB-IT®, 1/2 3PC WEDGE, PLATED
	232351	F25-EL SLOCK SPRING
	202031	GTI GRABB-IT®, FE CHUCK BODY, PLATED
	202033	GTI GRABB-IT®, FE STEM, PLATED

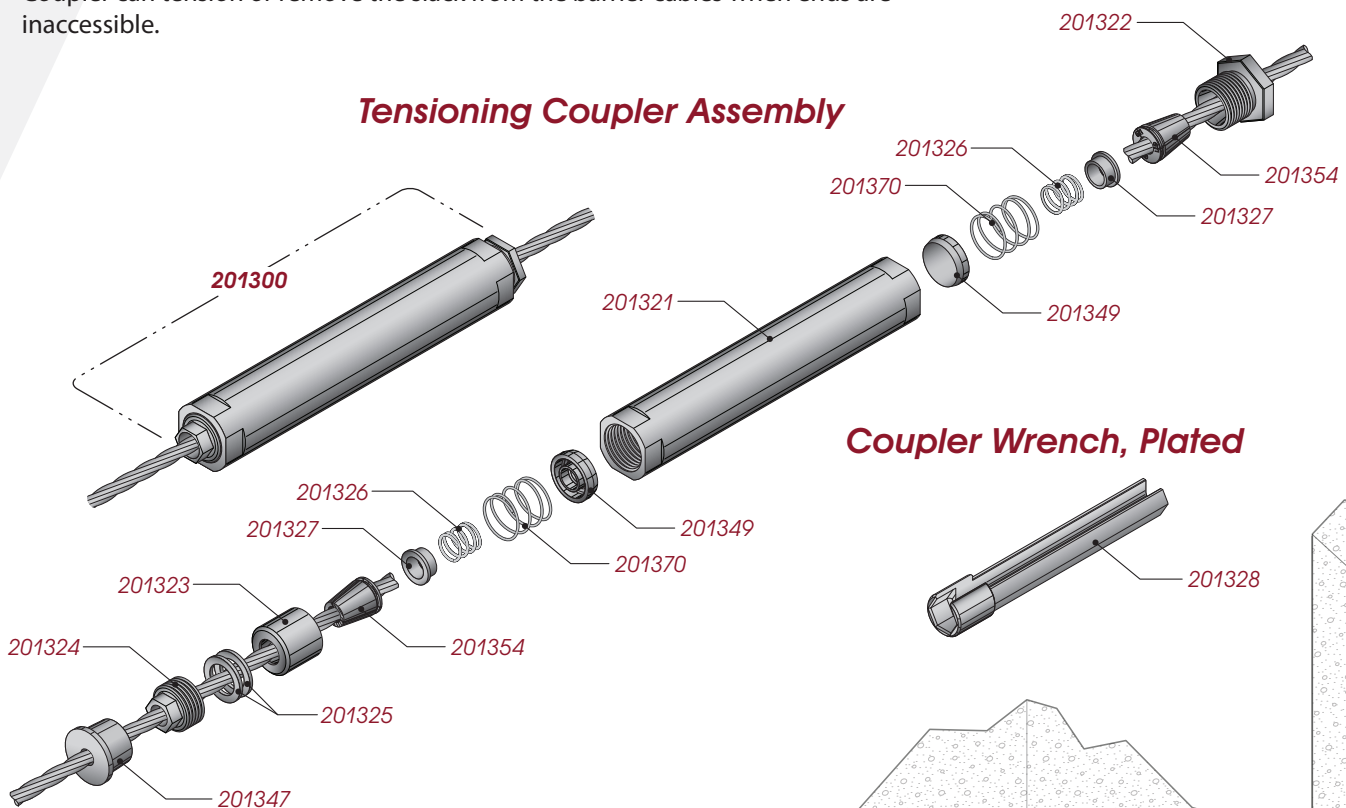
## GTI Barrier Cable System Tensioning Couplers

INNOVATION ♦ RELIABILITY ♦ QUALITY ♦ PERFORMANCE ♦ INNOVATION ♦ RELIABILITY ♦ QUALITY ♦ PERFORMANCE ♦ INNOVATION ♦ RELIABILITY ♦ QUALITY ♦ PERFORMANCE

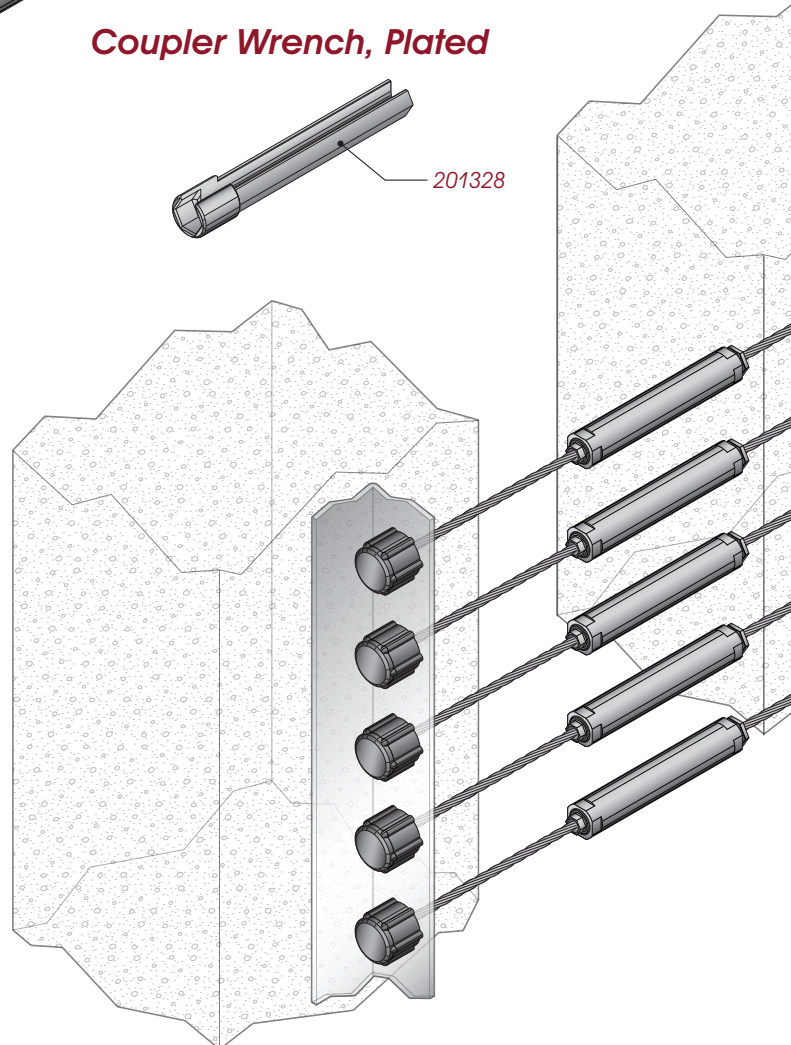
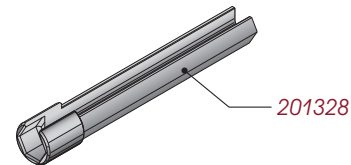
### Floating Tensioning Coupler assembly designed to connect ends of two barrier cables together

- Creates a continuous barrier cable between columns/support points.
- Coupler can tension or remove the slack from the barrier cables when ends are inaccessible.

### Tensioning Coupler Assembly



### Coupler Wrench, Plated



GTI BCS - TENSIONING COUPLERS		
<b>201300</b>	<b>BCS-05, COUPLER, TENSIONING, ASSEMBLY, 0.5", including</b>	
	201321	BCS-05, BODY, COUPLER, PLATED
	201322	BCS-05, THREADED BARREL ANCHOR, COUPLER, PLATED
	201323	BCS-05, SMOOTH BARREL ANCHOR, COUPLER, PLATED
	201324	BCS-05, STRESSING NUT, COUPLER, PLATED
	201325	BCS-05, WASHER, COUPLER
	201326	BCS-05, SPRING, COUPLER
	201327	BCS-05, SPRING SPACER, COUPLER
	201347	BSC-05, BARREL PLUG
	201349	BCS-05, SPRING STOP, COUPLER
	201354	BCS-05, GTI S1-05, 3PC WEDGE, PLATED
	201370	BCS-05, SPRING, COUPLER BARREL
<b>201328</b>	<b>BCS-05, WRENCH, COUPLER, PLATED</b>	



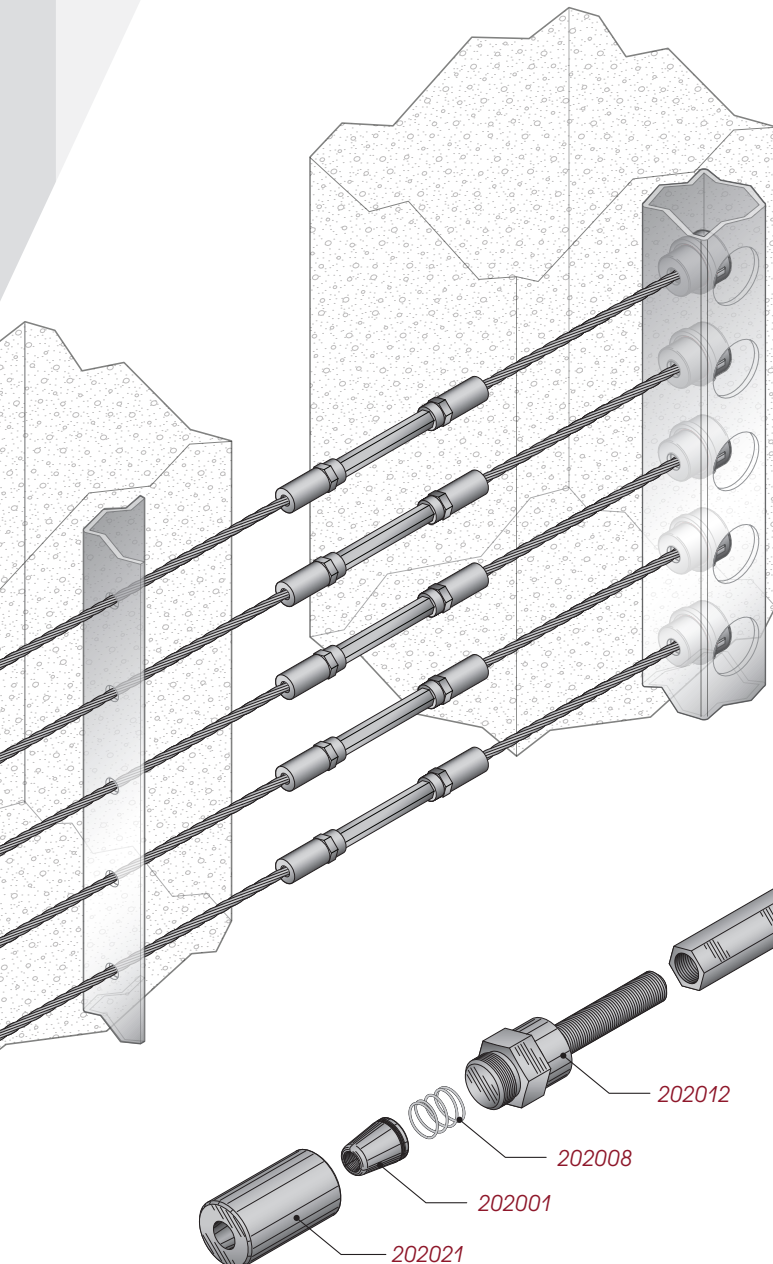
## GTI Barrier Cable System GRABB-IT® Splice

Internationally Recognized  
Technically Advanced  
Innovative Products

INNOVATION ♦ RELIABILITY ♦ QUALITY ♦ PERFORMANCE ♦ INNOVATION ♦ RELIABILITY ♦ QUALITY ♦ PERFORMANCE ♦ INNOVATION ♦ RELIABILITY ♦ QUALITY ♦ PERFORMANCE

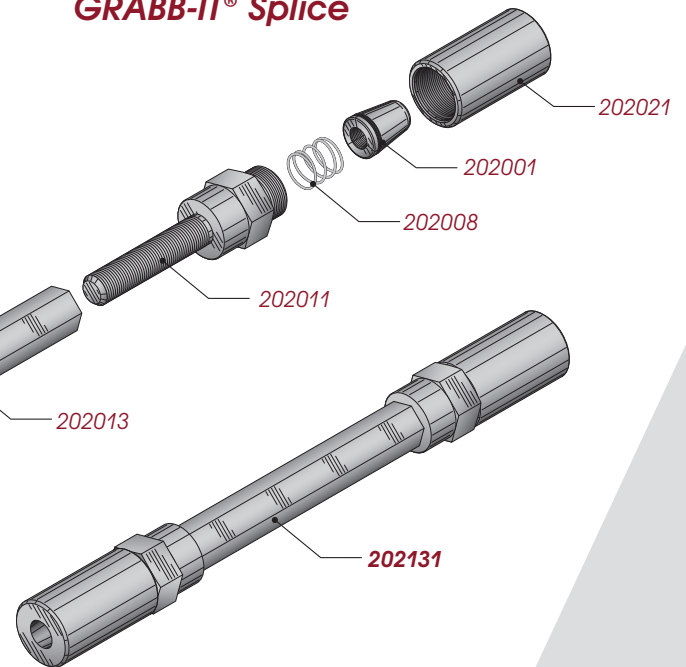
### Floating GRABB-IT® Splice assembly designed to connect ends of two strands/barrier cables together

- Creates a continuous barrier cable between columns/support points.
- Splice can tension or remove the slack from the barrier cables when ends are inaccessible.
- Splice can be used for connecting strand ends in repair projects.



GTI BCS - GRABB-IT® SPLICE		
202131	GTI GRABB-IT®, SPLICE, 1/2"	
	202001	GTI GRABBIT®, 1/2 3PC WEDGE, PLATED
	202008	GTI GRABBIT®, SPRING 8989 -.067
	202011	GTI GRABBIT®, SPLICE, RH STEM, PLATED
	202012	GTI GRABBIT®, SPLICE, LH STEM, PLATED
	202013	GTI GRABBIT®, SPLICE, CTR NUT, PLATED
	202021	GTI GRABBIT®, CHUCK BODY, PLATED

### GRABB-IT® Splice







## GTI Barrier Cable System

Internationally Recognized  
Technically Advanced  
Innovative Products

INNOVATION ♦ RELIABILITY ♦ QUALITY ♦ PERFORMANCE ♦ INNOVATION ♦ RELIABILITY ♦ QUALITY ♦ PERFORMANCE ♦ INNOVATION ♦ RELIABILITY ♦ QUALITY ♦ PERFORMANCE

GTI offers the most advanced **Barrier Cable Systems** available for use in vehicle and pedestrian barriers, such as parking structures. The **GTI Barrier Cable Systems** can be used through columns or external to columns and consists of a multiple anchorages allowing a complete barrier cable system with a variety of optional anchorage configurations.

The **GTI BCS** product line is the first and only system that enables the use of encapsulations and shop prefabrication giving our customers the freedom to work in the most effective manner possible.

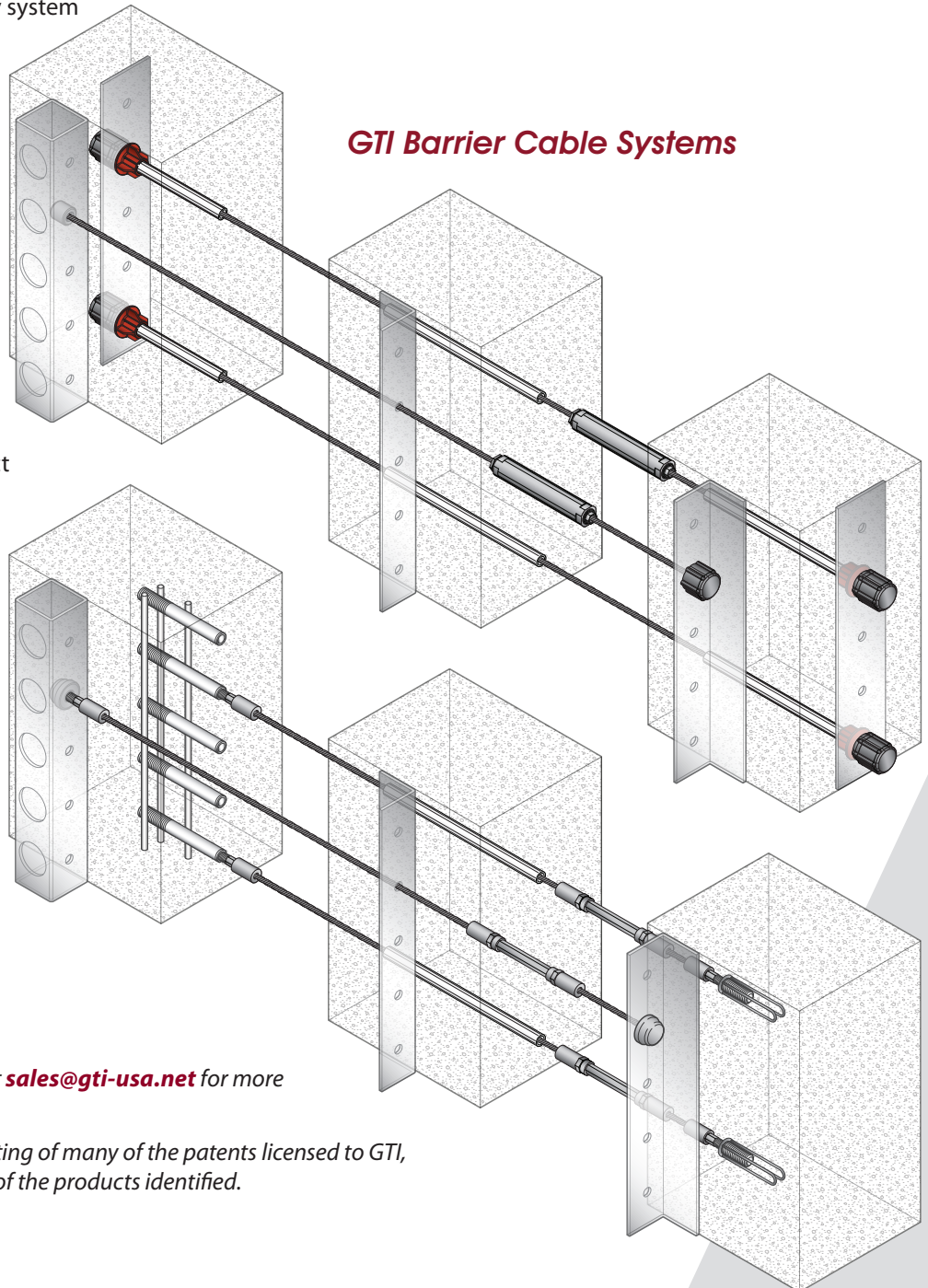
**GTI BCS** products provide standard or encapsulated coated barrel anchors, a barrier cable system that can be contained within a column or exposed on the column's exterior, and a floating intermediate tension coupler when barrier strand ends are inaccessible.

Standard exposed components are zinc-coated for extra corrosion protection for the exposed system. The **GTI BCS** product line is available in several strand sizes, including 1/2", 7/16" and 3/8".

**GTI GRABB-IT®** products provide a reliable, proven system for barrier cables. The **GTI GRABB-IT®** product line reduces installation time significantly at sites.

Both product lines are in compliance with industry codes while offering custom solutions to end-users. Testing confirms that **GTI Barrier Cable Systems** meet ACI and PTI Requirements for post-tensioning anchors. The systems are easy to use and installer friendly.

### GTI Barrier Cable Systems



Please contact GTI Technical Representatives at [sales@gti-usa.net](mailto:sales@gti-usa.net) for more information.

See [www.gti-usa.net/patents.shtml](http://www.gti-usa.net/patents.shtml) for a listing of many of the patents licensed to GTI, including patents that may cover one or more of the products identified.