



*Internationally Recognized
Technically Advanced
Innovative Products*

INNOVATION ♦ RELIABILITY ♦ QUALITY ♦ PERFORMANCE ♦ INNOVATION ♦ RELIABILITY ♦ QUALITY ♦ PERFORMANCE ♦ INNOVATION ♦ RELIABILITY ♦ QUALITY ♦ PERFORMANCE

GTI[®]
***POST-TENSIONING
FIELD EQUIPMENT***



GENERAL TECHNOLOGIES, INC.[®]



GTI® Post Tensioning Installation Equipment

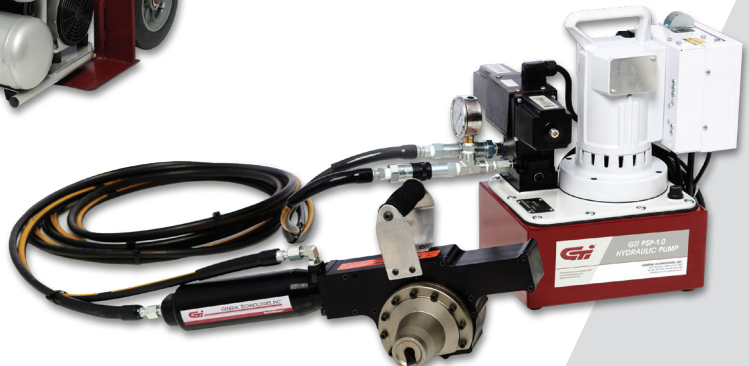
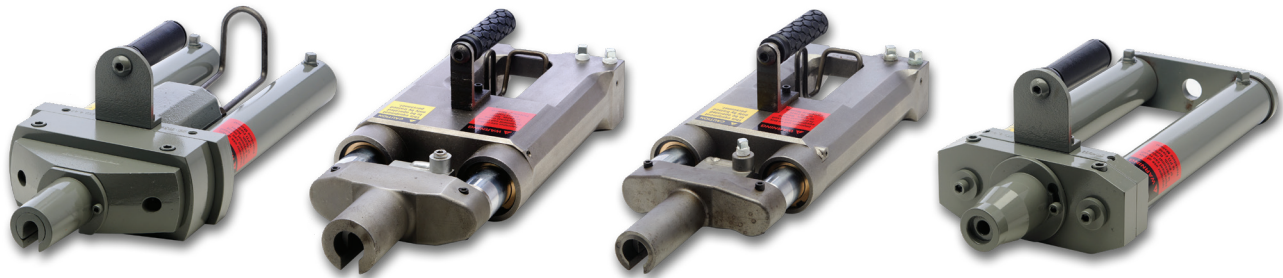
INNOVATION ♦ RELIABILITY ♦ QUALITY ♦ PERFORMANCE ♦ INNOVATION ♦ RELIABILITY ♦ QUALITY ♦ PERFORMANCE ♦ INNOVATION ♦ RELIABILITY ♦ QUALITY ♦ PERFORMANCE

Only **General Technologies, Inc.** provides a complete line of equipment, tools and accessories to get your installation done quickly and safely.

The Stressing Systems are matched sets that assure correct operation. This includes a high performance **GTI® Stressing Jack**, a compatible **GTI® Hydraulic Pump**, hose set, gauge and fittings. The complete system is easy to order and is available with several options.

When it comes to tendon finishing **GTI** provides all of the best solutions for you to deliver the highest quality workmanship for your clients. **GTI** can provide options based on the specific needs and requirements each jobsite may have. For flameless cutting in the pocket **GTI** offers not only the **GTI® Hydraulic PocketShear®** but also the **GTI® Battery PocketShear®** for the ultimate in portability. And for fast tendon cutting in or out of the pocket **GTI** can provide the **GTI® PLASMA Cutting System**.

GTI manufactures and carries a complete line of installation accessories and hand tools to compliment your installation process and make you more productive in the field.



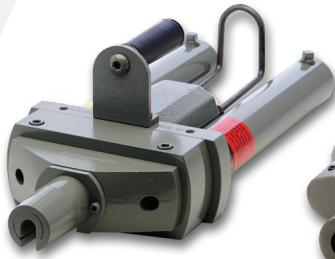


GTI® Stressing Systems

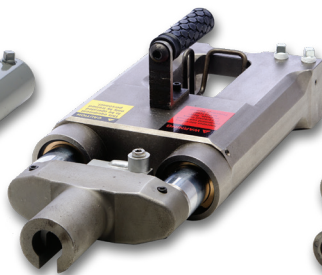
Internationally Recognized
Technically Advanced
Innovative Products

INNOVATION ♦ RELIABILITY ♦ QUALITY ♦ PERFORMANCE ♦ INNOVATION ♦ RELIABILITY ♦ QUALITY ♦ PERFORMANCE ♦ INNOVATION ♦ RELIABILITY ♦ QUALITY ♦ PERFORMANCE

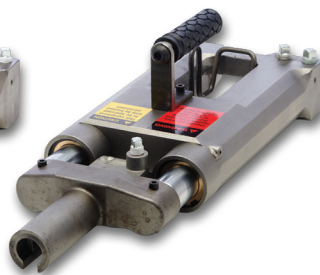
Field Proven Tools for Mono-Strand Stressing



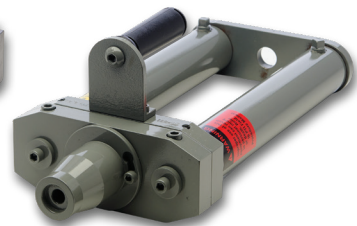
GTI® TJ Series



GTI® 6DA1 Series



GTI® 5DA1 Series



GTI® 5SCJ Series

GTI® Stressing Jacks

- Durable, field tested and proven designs with ergonomic handle to reduce operator fatigue
- Single acting **GTI® PTJ** models available with spring seating or power seating are ideal for slab-on-grade applications
- Double acting **GTI® DA** models have an 8.5" stroke and are machined from steel billets. They feature standard power seating and have gun-drilled hydraulic fluid passages
- **GTI® 5DA1 Jacks** come equipped with a 4" **GTI® Nose** while **GTI® PTJ Jacks** come with a 3" **GTI® Nose**. Other nose lengths available upon request
- A full line of gripper sizes are available to stress most common strand sizes
- Complete line of repair kits available for quick and easy service

GTI® Hydraulic Pumps

- The industry standard for stressing systems
- **GTI® Axial Piston Pump** element is field proven and easy to service
- Universal electric motor is durable and easy to service
- True unloading valve achieves greater pump efficiency allowing higher flow at maximum pressure





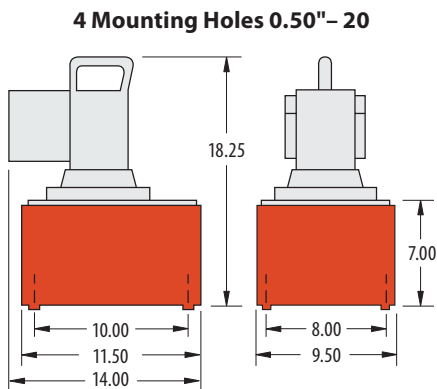
GTI® Stressing Systems

INNOVATION ♦ RELIABILITY ♦ QUALITY ♦ PERFORMANCE ♦ INNOVATION ♦ RELIABILITY ♦ QUALITY ♦ PERFORMANCE ♦ INNOVATION ♦ RELIABILITY ♦ QUALITY ♦ PERFORMANCE

GTI® Stressing Jacks & Hydraulic Pumps

JACK MODEL	SYSTEM (110V) PART NUMBER	SYSTEM (220V) PART NUMBER	PUMP MODEL	STRAND DIAMETER RANGE	TOOL CAPACITY (TONS)	JACK TYPE	SEATER TYPE	STROKE (IN ²)	EFFECTIVE CYLINDER AREA (IN ²)	JACK WEIGHT (LBS)
PTJ-5S	232301	232302	GTI PTP-2.5 W/ 9500 VALVE	.250-.50	20	SINGLE ACTING	SPRING	10	4.48	55
PTJ-5P	232306	232307	GTI PTP-2.5 W/ 9628 VALVE	.250-.50	20	SINGLE ACTING	POWER	10	4.48	55
PTJ-6S	232401	232402	GTI PTP-2.5 W/ 9500 VALVE	.250-.62	30	SINGLE ACTING	SPRING	10	6.28	76
PTJ-6P	232406	232407	GTI PTP-2.5 W/ 9628 VALVE	.250-.62	30	SINGLE ACTING	POWER	10	6.28	76
5DA1	232101	N/A	GTI PTP-2.5 W/ 9628 VALVE	.250-.50	20	DOUBLE ACTING	POWER	8.5	6.28	42
6DA1	232201	232206	GTI PTP-2.5 W/ 9628 VALVE	.250-.62	30	DOUBLE ACTING	POWER	8.5	7.95	52
5SCJ	232321	232326	GTI PTP-2.5 W/ 9500 VALVE	0.50	20	SINGLE ACTING	NO SEATER	10	4.48	40

JACK MODEL	SYSTEM LEGEND	PRIMARY APPLICATION
PTJ-5S	GTI POST-TENSIONING JACK - 0.5" STRAND DIAMETER WITH SPRING SEATER	SLAB-ON GRADE
PTJ-5P	GTI POST-TENSIONING JACK - 0.5" STRAND DIAMETER WITH POWER SEATER	SLAB-ON GRADE
PTJ-6S	GTI POST-TENSIONING JACK - 0.6" STRAND DIAMETER WITH SPRING SEATER	SLAB-ON GRADE
PTJ-6P	GTI POST-TENSIONING JACK - 0.6" STRAND DIAMETER WITH POWER SEATER	SLAB-ON GRADE
5DA1	GTI DOUBLE ACTING JACK - 0.5" STRAND DIAMETER WITH POWER SEATER	ELEVATED AND COMMERCIAL CONSTRUCTION
6DA1	GTI DOUBLE ACTING JACK - 0.6" STRAND DIAMETER WITH POWER SEATER	ELEVATED AND COMMERCIAL CONSTRUCTION
5SCJ	GTI SHORT CABLE JACK - 0.5" STRAND DIAMETER	REPAIR / REMEDIATION



Note: All dimensions are in inches

FLOW AT RATED PRESSURE:

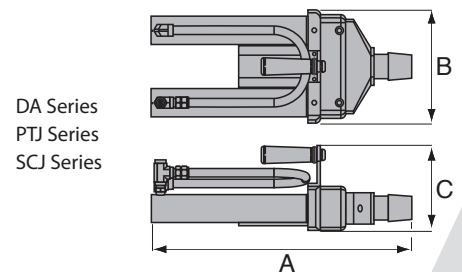
60 in³/min

MOTOR SIZE:

1.125 hp

MAXIMUM OPERATING PRESSURE:

10,000 psi



DA Series
PTJ Series
SCJ Series

DIMENSIONS (IN)			
MODEL NO.	A	B	C
PTJ5	21.00	9.00	6.50
PTJ6	22.00	10.20	7.00
5DA1	18.50	7.50	6.50
6DA1	18.50	8.50	6.50
5SCJ	12.00	8.30	4.80

All advance and retract hydraulic ports are 0.375" NPTF.



GTI® Stressing Jack Parts & Accessories

Internationally Recognized
Technically Advanced
Innovative Products

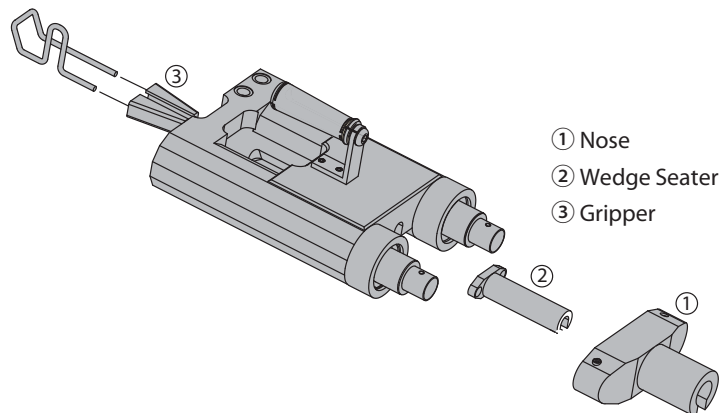
INNOVATION ♦ RELIABILITY ♦ QUALITY ♦ PERFORMANCE ♦ INNOVATION ♦ RELIABILITY ♦ QUALITY ♦ PERFORMANCE ♦ INNOVATION ♦ RELIABILITY ♦ QUALITY ♦ PERFORMANCE

Optional and Replacement Parts



GTI® JACK PARTS AND ACCESSORIES

OPTION	SIZE (IN)	PTJ-5	PTJ-6	SDA1	6DA1
GTI® NOSE ASSEMBLY	3"	232058	232058	232121	232221
	4"			232122	
	5"				232222
	6"	232068	232068	232123	232223
	8"				232224
	12"			232127	232225
GTI® JACK FEET	SET			232196	232296





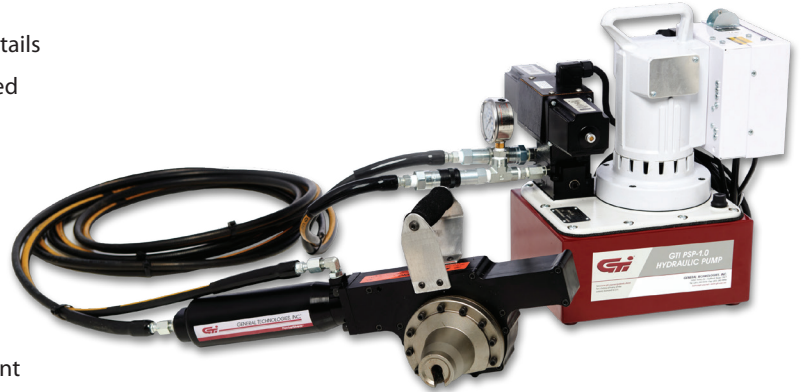
Tendon Finishing Tools - GTI® Hydraulic PocketShear®

INNOVATION ♦ RELIABILITY ♦ QUALITY ♦ PERFORMANCE ♦ INNOVATION ♦ RELIABILITY ♦ QUALITY ♦ PERFORMANCE ♦ INNOVATION ♦ RELIABILITY ♦ QUALITY ♦ PERFORMANCE

Cut Tendon Tails in the Pocket – Quickly, Safely and Without Flame

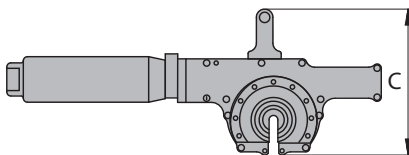
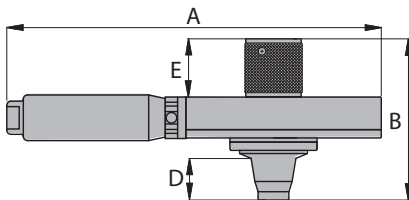
GTI® Hydraulic PocketShear®

- Eliminates the need for hot work permits when cutting tendon tails
- Easy to use and leaves an even cut end free of burrs at a specified dimension from anchor
- Does not push, pull or heat the strand or anchorage
- **GTI® Rotating Cutting Blades** are confined in unit for safety
- Can be configured for 0.5" and 0.6" Strand diameters
- Special **GTI® Nose** available for **45° GTI® Pocket Formers**
- **GTI® Pump** is built on the Industry Standard platform
- Utilizes new 1 gallon reservoir to reduce the weight and footprint
- Powered by a **GTI® High Flow Pump** to reduce the cycle time to 4 seconds per tendon
- Increased speed allows for a more efficient cut resulting in longer life of **GTI® Nose Pieces and Blades**



POCKET SHEAR SELECTION CHART

SHEAR MODEL	110V SYSTEM PART NUMBER	220V SYSTEM PART NUMBER	PUMP MODEL	STRAND DIAMETER	NOSE PIECE	FIXED BLADE	ROTATING BLADE
GTI PSH05	231101	231102	GTI PSP-1.0	0.5"	231135	231131	231132
GTI PSH05 45DEG	231103	231104	GTI PSP-1.0	0.5"	231137	231131	231134
GTI PSH06	231201	231202	GTI PSP-1.0	0.6"	231205	231231	231232



Hydraulic Version

DIMENSIONS

SHEAR MODEL	STRAND DIAMETER	LENGTH A (IN)	LENGTH B (IN)	LENGTH C (IN)	LENGTH D (IN)	LENGTH E (IN)	WEIGHT (LBS)
GTI PSH05	0.5"	22.60	9.80	8.80	2.51	3.50	27.00
GTI PSH05 45DEG	0.5"	22.60	9.80	8.80	2.51	3.50	27.00
GTI PSH06	0.6"	28.60	10.70	10.20	3.02	3.50	35.00

GTI® Replacement Blades

Order the correct blades to match your Shear from the table shown below.



See www.gti-usa.net/patents.shtml for a listing of many of the patents licensed to GTI, including patents that may cover one or more of the products identified.



Tendon Finishing Tools GTI® Battery PocketShear®

Internationally Recognized
Technically Advanced
Innovative Products

INNOVATION ♦ RELIABILITY ♦ QUALITY ♦ PERFORMANCE ♦ INNOVATION ♦ RELIABILITY ♦ QUALITY ♦ PERFORMANCE ♦ INNOVATION ♦ RELIABILITY ♦ QUALITY ♦ PERFORMANCE

Portable & Flameless Cutting in the Pocket

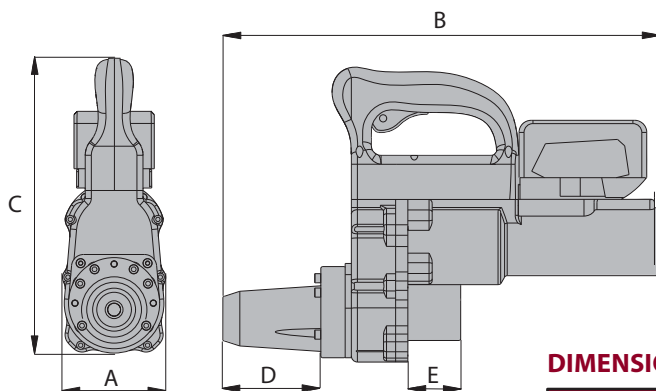
GTI® Battery PocketShear®

- All the features of the **GTI® Battery PocketShear®** with added benefits
- No generators and refueling
- Portable design that is lightweight and easy to handle
- Two rechargeable battery packs and 110V charging station along with robust carry case included



SELECTION CHART

SHEAR MODEL	SYSTEM PART NUMBER	STRAND DIAMETER	NOSE PIECE	FIXED BLADE	ROTATING BLADE
GTI BPS-05	231301	0.5"	231325	231131	231323
GTI BPS-06	231401	0.6"	231425	231231	231423



Battery Version

DIMENSIONS

SHEAR MODEL	STRAND DIAMETER	LENGTH A (IN)	LENGTH B (IN)	LENGTH C (IN)	NOSE DEPTH D (IN)	CLAMP DEPTH E (IN)	WEIGHT (LBS)
GTI PSB05-TH	0.5"	4.25	18.00	12.12	4.03	2.17	29.00
GTI PSB06-TH	0.6"	5.75	18.10	13.50	4.13	2.13	38.00

GTI® Replacement Blades

Order the correct blades to match your Shear from the table shown below.



See www.gti-usa.net/patents.shtml for a listing of many of the patents licensed to GTI, including patents that may cover one or more of the products identified.



Tendon Finishing Tools – GTI® PLASMA Cutting System

INNOVATION ♦ RELIABILITY ♦ QUALITY ♦ PERFORMANCE ♦ INNOVATION ♦ RELIABILITY ♦ QUALITY ♦ PERFORMANCE ♦ INNOVATION ♦ RELIABILITY ♦ QUALITY ♦ PERFORMANCE

Fast Tendon Cutting In or Out of the Pocket



PARTS AND ACCESSORIES

CONSUMABLES	GTI® 100 SL PLASMA CUTTER SERIES	
	110V SYSTEM	220V SYSTEM
	PART NUMBER	
	230521	230522
GTI SHIELD ASSEMBLY	230101	
GTI SHIELD CUP	230121	
GTI GAS DISTRIBUTOR	230122	
GTI ELECTRODE	230123	
GTI TIP	230124	
GTI TORCH HEAD	230126	
GTI HANDLE W/ SPLIT TRIGGER	230127	
GTI LEAD ASSEMBLY 50FT	230128	

Important Note! The **GTI® Plasma Cutter** was developed and designed for use with **GTI® Anchorages** and **GTI® Pocket Formers**. The **GTI® Plasma Cutter** may not be used with other type anchorages and the equipment should never be modified.

See www.gti-usa.net/patents.shtml for a listing of many of the patents licensed to GTI, including patents that may cover one or more of the products identified.



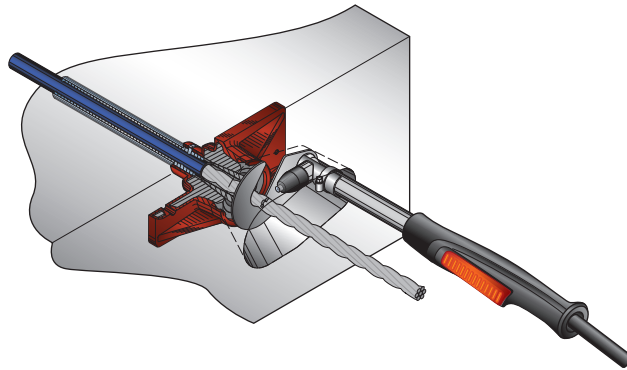
Tendon Finishing Tools GTI® PLASMA Cutting System

Internationally Recognized
Technically Advanced
Innovative Products

INNOVATION ♦ RELIABILITY ♦ QUALITY ♦ PERFORMANCE ♦ INNOVATION ♦ RELIABILITY ♦ QUALITY ♦ PERFORMANCE ♦ INNOVATION ♦ RELIABILITY ♦ QUALITY ♦ PERFORMANCE

Fast Tendon Cutting In or Out of the Pocket

- The fastest technique available to cut strand tails.
- For applications or preferences that will not accept acetylene/oxygen torch.
- The **GTI® 100SL Plasma Cutter** comes with a 50 foot long torch lead, compressor and a custom designed dolly.
- System includes shield to protect wedge during cutting



POWER SUPPLY	GTI® 100SL PLASMA CUTTER SYSTEM — Cutting System Specification
Input Power:	208/230/240 VAC 50/60 Hz, Single phase 30-45 Amps
Panel Controls: End Panel Indicators:	On/Off Switch Power: Illuminates when on Overheating Indicator: Illuminates when unit overheats Torch Protection: Illuminates when consumables are not installed correctly Gas – Check: Illuminates when not enough air supply Air Pressure Gauge: Indicates available air pressure
Side Panel Gauge:	Amps Volts
System Dimensions:	Height: 51" (1300mm) Width: 19" (485mm) Length: 14" (360mm)
System Weight:	140 Lbs. (57 Kg)
Cutting Capacity:	1/2" (13mm) 3/4" (19mm) Severance
Torch and Work Cable Length:	50 ft. (15.2m)
Model:	SL100
Cutting Flow:	3.3CFM (95 LPM)
Pilot:	CD Start/Pulsed DC
Torch Lead Length:	50 feet (15.2m)
Torch Consumables:	Gas Distributor, Electrode, Tip & Shield Cup
Compressor	
Model:	4620A /4620AC - 22060 2.0 Horse Power, 4.6 Gallon Twin Tank Oil Free
Air Pressure:	5.3CFM at 90 psi (153 LPM)
Power:	110 VAC or 230 VAC (+/-15%) upon request

GTI® Field Push Seater

INNOVATION ♦ RELIABILITY ♦ QUALITY ♦ PERFORMANCE ♦ INNOVATION ♦ RELIABILITY ♦ QUALITY ♦ PERFORMANCE ♦ INNOVATION ♦ RELIABILITY ♦ QUALITY ♦ PERFORMANCE

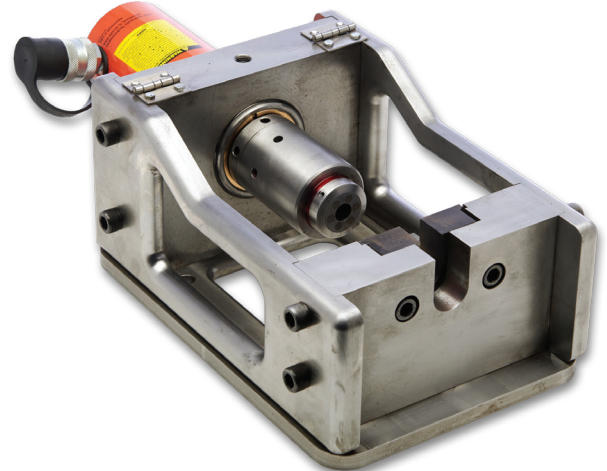
Tools to Get the Job Done Right

The **GTI® Field Push Seater** uses a patented method to fully seat the wedges into the anchor cavity. The field model is portable and an excellent choice when fabricating tendons on the construction site. The **GTI** method does not require the sheathing to be removed in front of the anchorage and there are no gripper marks left on the strand. Push seating provides greater reliability and consistency than pull-seating, while providing the same seating force.

The **GTI® Field Push Seater** was developed and designed for use with **GTI® Anchorages**.

The **GTI® Field Push Seater** may not be used with other than **GTI® Anchorages** and the equipment may not be modified.

GTI® Push Seater is to be used with **GTI® PTP-2.5 Hydraulic Pump** with 9610 Valve.



GTI® .5 DEAD-END SEATER COMPONENTS	
230201	GTI .5 SEATER, D.E., RAM, ASSEMBLY
230210	GTI .5 SEATER, D.E., COUPLER
230211	GTI .5 SEATER, D.E., SLEEVE
230212	GTI .5 SEATER, D.E., RAM
230213	GTI .5 SEATER, D.E., WEDGE HOLDER, MAGNETIC
230214	GTI .5 SEATER, D.E., SPRING
230215	GTI SEATER, D.E., MAGNET
230224	GTI .5 SEATER, D.E., FIELD HOUSING, ASSEMBLY
230204	GTI .5 SEATER, D.E., HOUSING PLATE, TOP
230225	GTI .5 SEATER, D.E., FIELD INSERT PLATE, BASE
230226	GTI .5 SEATER, D.E., FIELD HOUSING PLATE, LEFT
230227	GTI .5 SEATER, D.E., FIELD HOUSING PLATE, RIGHT
230228	GTI .5 SEATER, D.E., FIELD HOUSING PLATE, BOTTOM

GTI® .5 SPECIFIC ANCHORAGE INSERTS	
230625	GTI INSERT – BARE ANCHOR, GTI S1-05, ASSEMBLY
230620	GTI INSERT – BARE ANCHOR, GTI S1-05
230640	GTI INSERT – ANCHOR RETAINING PIN
230626	GTI INSERT – BARE ANCHOR, GTI SM1-05, ASSEMBLY
230621	GTI INSERT – BARE ANCHOR, GTI SM1-05
230640	GTI INSERT – ANCHOR RETAINING PIN
230627	GTI INSERT – BARE ANCHOR, GTI SC1-05, ASSEMBLY
230622	GTI INSERT – BARE ANCHOR, GTI SC1-05
230640	GTI INSERT – ANCHOR RETAINING PIN
230628	GTI INSERT – BARREL ANCHOR 0.5", ASSEMBLY
230623	GTI INSERT – BARREL ANCHOR 0.5"
230242	GTI .5 SEATER, D.E., RETAINING ARM, BARREL
230629	GTI INSERT – BARE ANCHOR, GTI SF1-05, ASSEMBLY
230624	GTI INSERT – BARE ANCHOR, GTI SF1-05
230640	GTI INSERT – ANCHOR RETAINING PIN
230636	GTI INSERT – ENCAPSULATION ANCHOR, GTI SM1-05, ASSEMBLY
230631	GTI INSERT – ENCAPSULATION ANCHOR, GTI SM1-05
230640	GTI INSERT – ANCHOR RETAINING PIN
230637	GTI INSERT – ENCAPSULATION ANCHOR, GTI SC1-05, ASSEMBLY
230632	GTI INSERT – ENCAPSULATION ANCHOR, GTI SC1-05
230640	GTI INSERT – ANCHOR RETAINING PIN

GTI® .6 DEAD-END SEATER COMPONENTS	
230301	GTI .6 SEATER, D.E., RAM, ASSEMBLY
230310	GTI .6 SEATER, D.E., COUPLER
230311	GTI .6 SEATER, D.E., SLEEVE
230312	GTI .6 SEATER, D.E., RAM
230313	GTI .6 SEATER, D.E., WEDGE HOLDER, MAGNETIC
230314	GTI .6 SEATER, D.E., SPRING
230215	GTI SEATER, D.E., MAGNET
230324	GTI .6 SEATER, D.E., FIELD HOUSING, ASSEMBLY
230304	GTI .6 SEATER, D.E., HOUSING PLATE, TOP
230325	GTI .6 SEATER, D.E., FIELD HOUSING PLATE, BASE
230326	GTI .6 SEATER, D.E., FIELD HOUSING PLATE, LEFT
230327	GTI .6 SEATER, D.E., FIELD HOUSING PLATE, RIGHT
230328	GTI .6 SEATER, D.E., FIELD HOUSING PLATE, BOTTOM
230350	GTI .6 SEATER, D.E., HYDRAULIC CYLINDER CLAMP
GTI® .6 SPECIFIC ANCHORAGE INSERTS	
	GTI INSERT – BARE ANCHOR, GTI S1-06, ASSEMBLY
230670	GTI INSERT – BARE ANCHOR, GTI S1-06
230332	GTI .6 SEATER, D.E., RETAINING ARM, BARE-LEFT
230333	GTI .6 SEATER, D.E., RETAINING ARM, BARE-RIGHT
	GTI INSERT – BARREL ANCHOR 0.6", ASSEMBLY
230671	GTI INSERT – BARREL ANCHOR, 0.6"
230342	GTI .6 SEATER, D.E., RETAINING ARM, BARREL
	GTI INSERT – ENCAPSULATION ANCHOR, GTI S1-06, ASSEMBLY
230680	GTI INSERT – ENCAPSULATION ANCHOR, GTI S1-06
230322	GTI .6 SEATER, D.E., RETAINING ARM, ENCAP-LEFT
230323	GTI .6 SEATER, D.E., RETAINING ARM, ENCAP-RIGHT

See www.gti-usa.net/patents.shtml for a listing of many of the patents licensed to GTI, including patents that may cover one or more of the products identified.



Installation Tools & Accessories

INNOVATION ♦ RELIABILITY ♦ QUALITY ♦ PERFORMANCE ♦ INNOVATION ♦ RELIABILITY ♦ QUALITY ♦ PERFORMANCE ♦ INNOVATION ♦ RELIABILITY ♦ QUALITY ♦ PERFORMANCE

Tools You Need to Get the Job Done Fast

Installation and Troubleshooting

- **GTI® Trouble Shooting Anchors** are used to help free a jack that will not release from a tensioned cable
- **GTI® Short Cable Tubes** and **GTI® Short Cable Noses** are used with **GTI® Reusable Splice Chucks** to facilitate stressing of short cables
- 12" and 18" **GTI® Chairs** are used with **GTI® Reusable Splice Chucks** to facilitate stressing of short cables
- **45° GTI® Stress Spacers** are used to allow a jack to make full contact with the anchor when **45° GTI® Pocket Formers** are used
- **GTI® Hand Wedge Setter** provides a quick way to pre-seat wedges for retention in anchor
- **GTI® Anchor Cleaning Tools** remove residual concrete slag and debris from seating area, for improved seating performance
- **GTI® Sheathing Stripper** cuts the sheathing from the strand in the anchor cavity so it can be removed, allowing wedges to seat properly in the anchor cavity after stressing

SELECTION CHART – Hand Tools

ITEM	DESCRIPTION	PART NUMBER
	0.5" GTI Trouble Shooting Anchor	201108
	0.6" GTI Trouble Shooting Anchor	201218
	GTI Short Cable Tube	230591
	GTI Short Cable Nose	230592
	12" GTI Chair	230594
	18" GTI Chair	230595
	0.5" GTI Reusable Splice Chuck	202653
	0.6" GTI Reusable Splice Chuck	202673
	45° GTI Stress Spacer	230593
	GTI Hand Wedge Setter	230596
	GTI Anchor Cleaning Tool	230597
	0.5" GTI Sheathing Stripper	206320
	0.6" GTI Sheathing Stripper	206420

See www.gti-usa.net/patents.shtml for a listing of many of the patents licensed to GTI, including patents that may cover one or more of the products identified.



General Technologies, Inc.

INNOVATION ♦ RELIABILITY ♦ QUALITY ♦ PERFORMANCE ♦ INNOVATION ♦ RELIABILITY ♦ QUALITY ♦ PERFORMANCE ♦ INNOVATION ♦ RELIABILITY ♦ QUALITY ♦ PERFORMANCE

Who we are

Philosophy

The **GTI** Business Philosophy is a simple one: bring innovative engineered solutions to the market that increase construction quality and longevity; focus on continually improving product reliability, quality, and performance; increase customer efficiencies and reduce costs by adapting materials and equipment to meet specialized needs; and always meet or exceed client expectations.

Innovation

GTI helps you bring ideas to fruition. We listen to your needs and engineer creative solutions that meet your critical criteria. We use a team approach to define, measure, analyze, improve and control when developing or improving your products. Bring us your special requirements and watch how a truly innovative company can help launch your dreams into an advantageous partnership.

Reliability

GTI Reliability is comprehensive. It primarily encompasses the ability of our systems to perform in routine circumstances, as well as hostile environments or unexpected circumstances. Additionally, relying on **GTI** to deliver your materials per the agreed upon schedule is one of our strongest assets.

Quality

GTI is Quality. We are driven to the highest quality standards. DMAIC, Lean, Six-Sigma, Flowcharts, Checksheets, Cause & Effect Diagrams, Pateros Charts, Scatter Diagrams, Histograms, and on and on. **GTI** wants you – our customer, our client, end-user, owner, designer – to know that when you specify **GTI**, you will receive the highest quality products available in the market today.

Performance

GTI is all about high-performance, engineered products. The pieces fit – critical dimensions are correct – performance as designed. **GTI** knows that exceptional product performance is crucial to your project running smoothly. **GTI** Products help economize field labor – minimizing overall project costs and schedules. We are proud that our products provide the best value with superior performance for the end user.

Recognition

GTI is globally recognized for Quality, High-Performance Products. With over 200 US and Worldwide Patents, **GTI** provides the confidence that its technically advanced products are accepted and used in all areas of the World.